

# PARTS LIST

for



## ICE CUBE MAKER

**MODEL  
EC 5100XP**



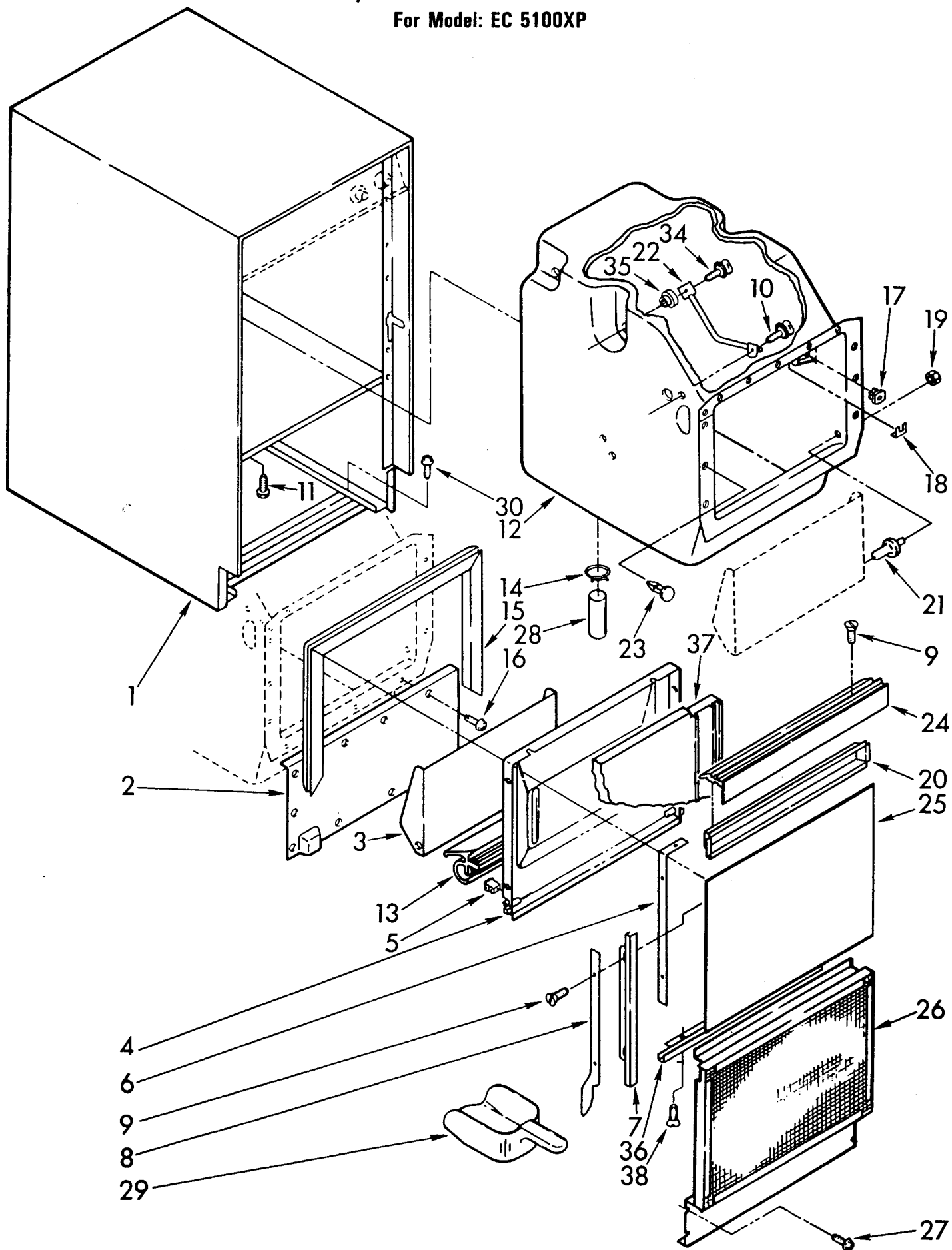
FOR CUSTOMER SATISFACTION ALWAYS USE  
FACTORY SPECIFICATION PARTS



**Whirlpool** CORPORATION  
Benton Harbor, Michigan.

# CABINET, LINER AND DOOR PARTS

For Model: EC 5100XP



FOR ORDERING INFORMATION REFER TO PARTS PRICE LIST

1	757942	Shell
2	758652	Front, Shell
3	756330	Door, Inner Bin
4	758655	Liner, Door
5	593192	Plug, Hinge
6	593104	Strip, Tapping (2)
7	758748	Trim, Door (2)
8	593184	Rail, R.S.
	593185	Rail, L.S.
9	681459	Screw, 8-32 x 1/2 (6)
10	680930	Thumbscrew
11	681036	Screw, Ground
12	756350	Liner (Includes Illus. 17, 18, 19, 20 & 21)
13	758169	Gasket, Bottom
14	596023	Clamp (2)
15	756663	Gasket
16	595431	Screw, 8-32 x 3/8
17	596807	Grommet
18	758492	Washer
19	681542	Nut, 1/4 Hex
20	758752	Pocket, Handle
21	758220	Stud (2)
22	593183	Well, Bin Thermostat
23	596812	Clip, Panel (12)
24	758622	Handle, Recessed
25		Panel, Exterior
	758746	White & Black
	758745	Almond & Harvest Gold
	758740	Toast & Platinum
26	758476	Grille
27	681167	Screw, 8-32 x 3/8
28	593577	Connector, Hose
29	585158	Scoop
30	680811	Screw, 10-32 x 3/8
34	681419	Thumbscrew, 10-1/2
35	596715	Well Nut (3)
36	758400	Trim, Door (Lower)
37	758608	Insulation, Door
38	681196	Screw

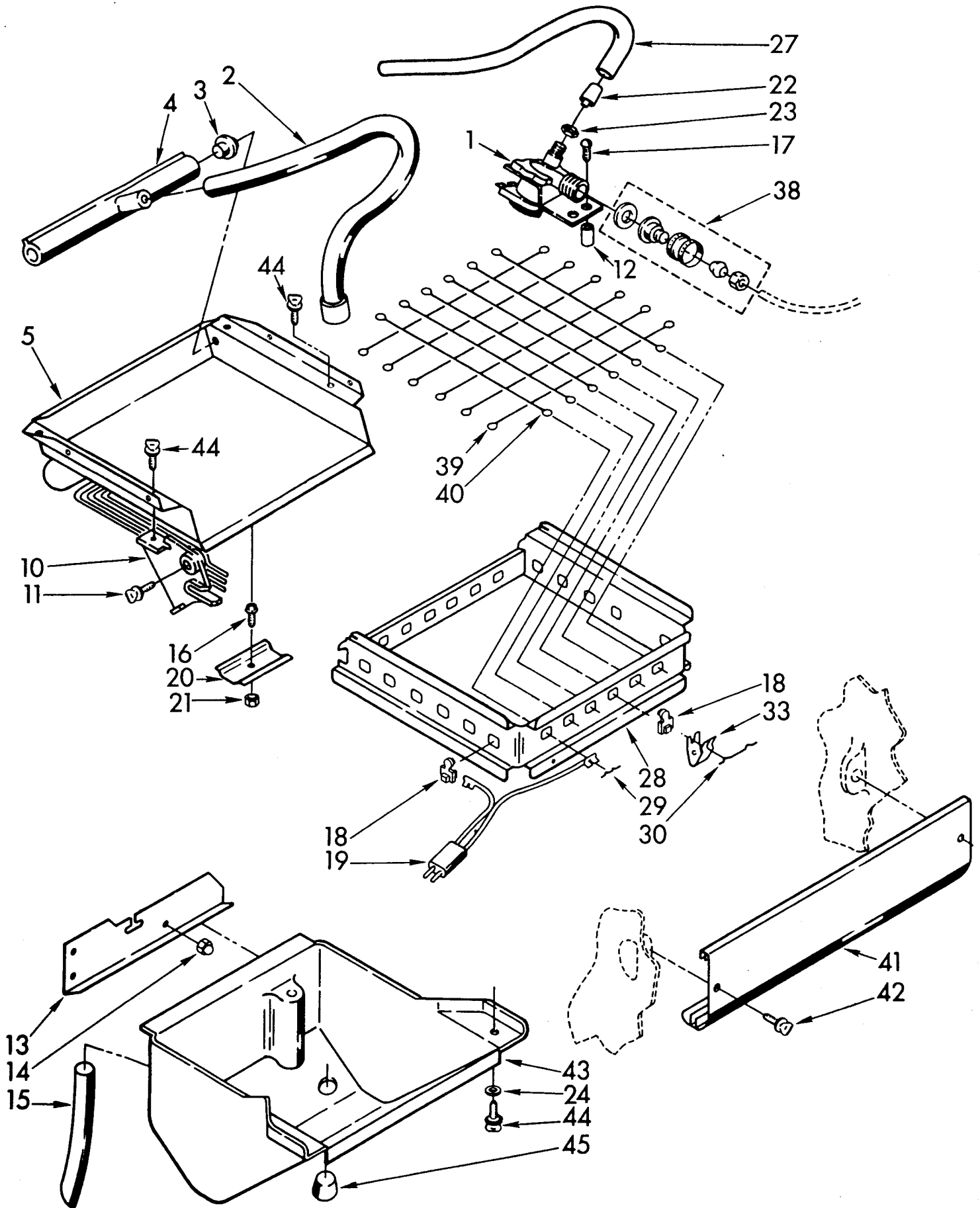
Following Parts Not Illustrated

503695	Cork Sealer
*206922	Primer, White (12 Oz. Spray Can)
*206925	Leveler, Enamel (12 Oz. Spray Can)
*350956	Enamel, Almond (13 Oz. Spray Can)
758469	Grid Assembly Complete (Standard Cube)
758470	Grid Assembly Complete (Cubelets 3/4 x 3/4)
876649	Leg Kit
702354	Ice Deflector Kit
978025	Valve, Access (1/4")
978026	Valve, Access (5/16")
LIT758459	Tech Sheet
LIT758559	Instructions, Installation
LIT758558	Instructions, Owner's
LIT789255	List, Parts

\*Note: DO NOT Spray Paints  
Where They May Come In Contact With Door Gaskets.

# EVAPORATOR, ICE CUTTER GRID AND PUMP PARTS

For Model: EC 5100XP



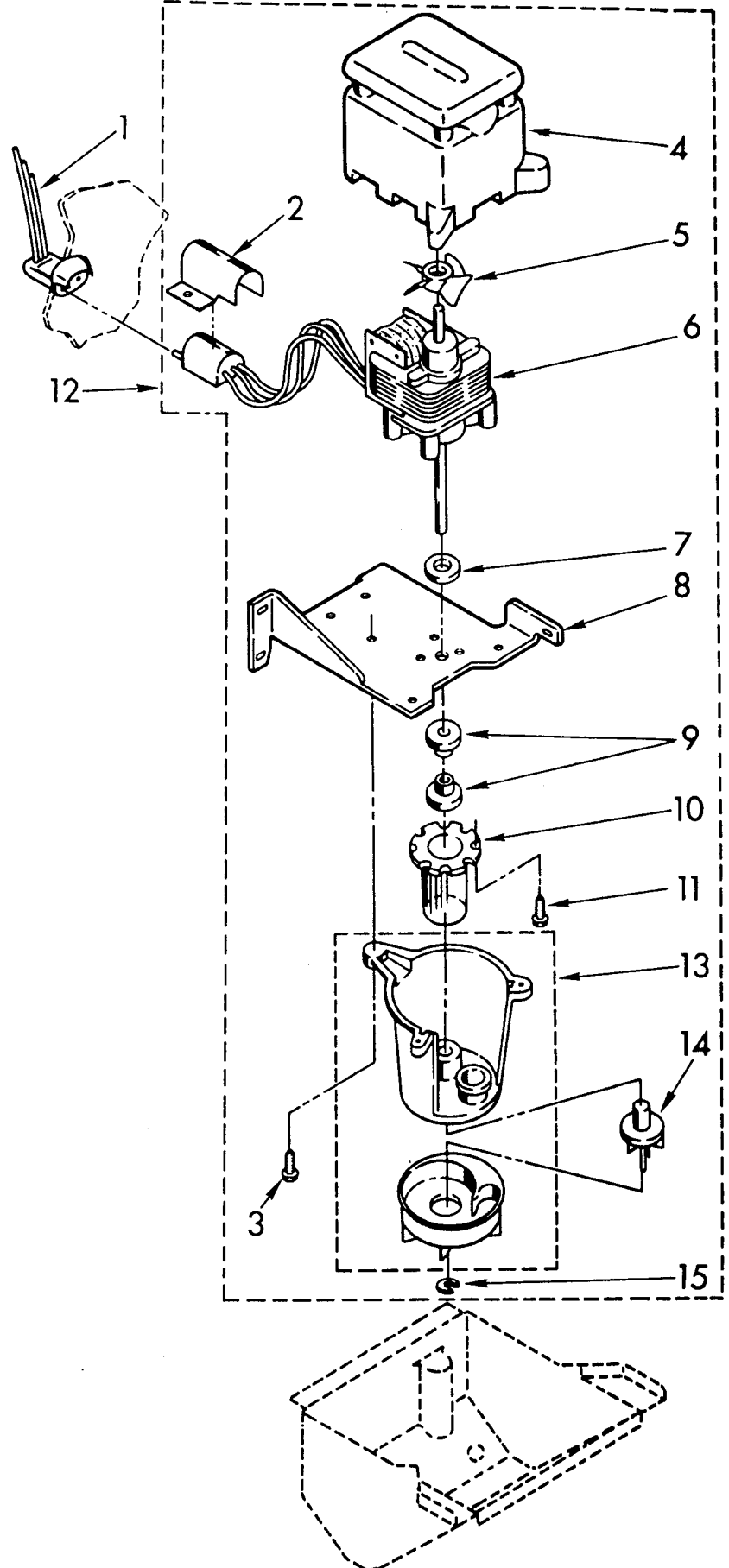
FOR ORDERING INFORMATION REFER TO PARTS PRICE LIST

789255

1	757433	Valve, Complete Water
2	585856	Tube, Plastic
3	564061	Plug (2)
4	585813	Dispenser, Water
5	758028	Evaporator
10	756564	Bracket, Grid Mounting (2)
11	681611	Thumbscrew
12	758493	Spacer, (2) Water Valve
13	585853	Shelf, Water Pan
14	681770	Nut, Acorn (3)
15	593369	Hose, Overflow
16	596037	Screw, 10-32 x 1/2
17	681674	Screw, 1/4 x 20 x 1 3/4
18	598277	Insulator (38)
19	587639	Cord, Grid
20	587662	Clamp
21	681676	Nut, Hex 10-32
22	841707	Insert
23	627018	Nut & Sleeve Assembly
24	681245	Washer
27	758037	Tube, Plastic
28	758458	Frame, Grid (Not A Service Item)
29	587111	Pin (17)
30	587112	Pin (4)
33	564072	Clip (19)
38	533238	Adapter (Supplied In Literature Package)
39	588048	Kit (Includes 9 Grid Cutter Wires)
40	588109	Kit (Includes 10 Grid Cutter Wires)
41	593171	Panel, Grid
42	681534	Thumbscrew, 10-32 x 3/4
43	756659	Pan
44	681419	Thumbscrew, 10 x 1/2
45	593572	Stopper, Water Pan

# PUMP PARTS

For Model: EC 5100XP

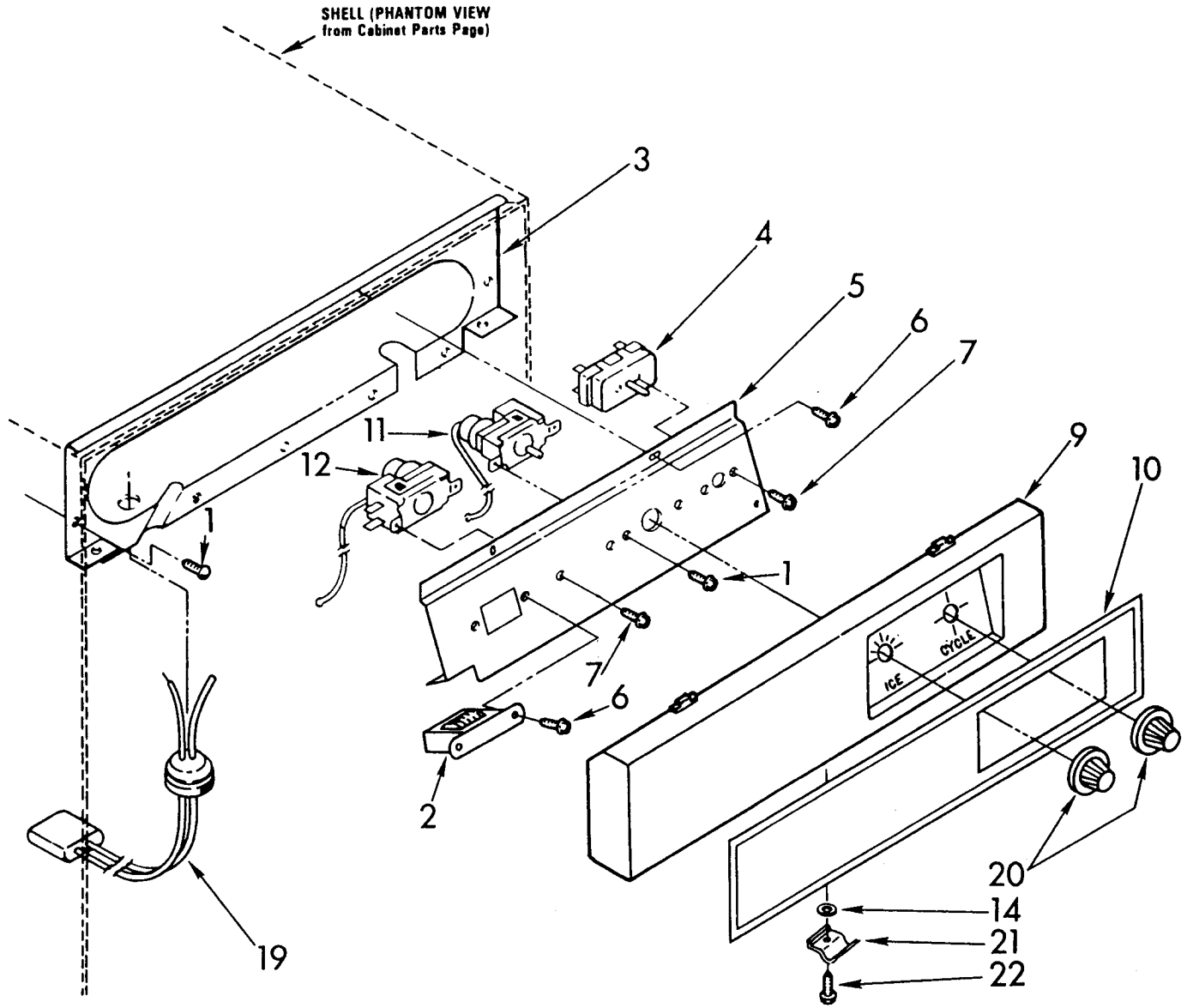


FOR ORDERING INFORMATION REFER TO PARTS PRICE LIST

1	569434	Plug, Pump
2	756124	Cover, Plug
3	681391	Screw, 8-18 x 3/4
4	593702	Housing, Motor
5	587096	Blade, Fan
6	756950	Motor, Pump
7	593060	Washer
8	756122	Bracket, Pump
9	596016	Grommet (2)
10	593229	Sleeve
11	681390	Screw, 8-32 x 3/8
12	756782	Pump, Water Complete Assembly
13	583518	Pump Assembly
14	569513	Impeller (Includes Retaining Ring 15)
15	681301	Ring, Retainer

# ESCUTCHEON AND CONTROL PARTS

For Model: EC 5100XP



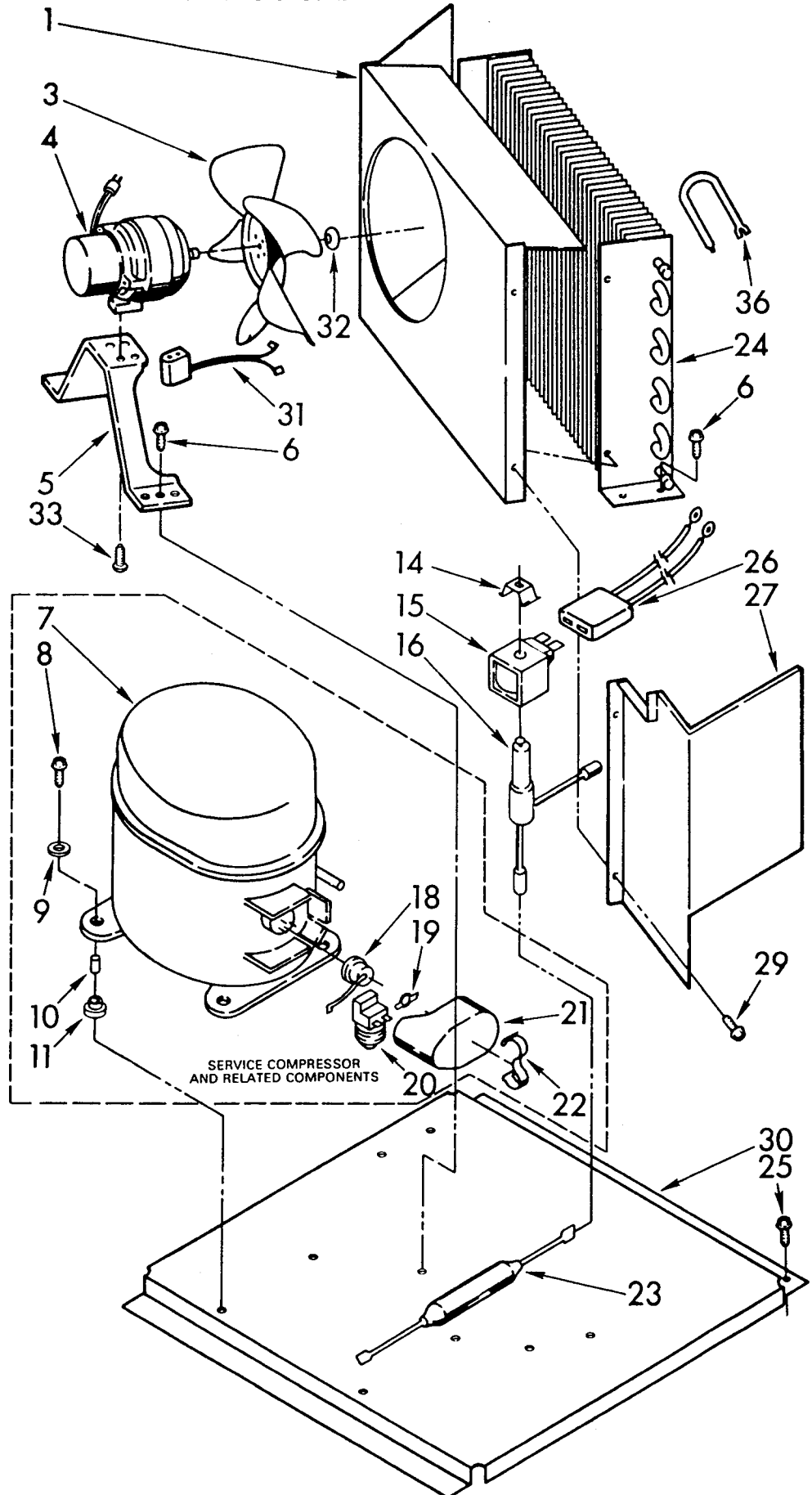
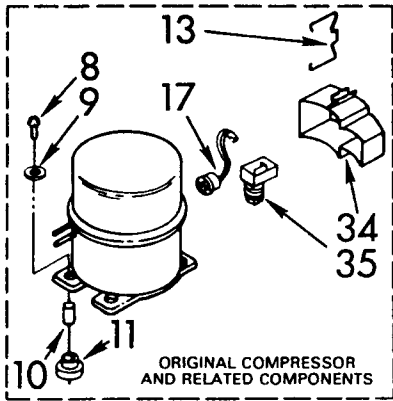
FOR ORDERING INFORMATION REFER TO PARTS PRICE LIST



1	681036	Screw
2	758414	Transformer
3	756664	Escutcheon, Panel
4	593139	Switch, Service
5	756341	Bracket, Control
6	595431	Screw, 8-15 x 3/8
7	595005	Screw, 8-32 x 1/4
9	758595	Escutcheon
10	758566	Decal, Escutcheon
11	598235	Thermostat, Evaporator
12	759141	Thermostat, Bin Control
14	681245	Washer
19	757464	Harness, Grid
20	758557	Knob (2)
21	593179	Latch
22	595142	Screw, 8-32 x 1/2

# UNIT PARTS

For Model: EC 5100XP



FOR ORDERING INFORMATION REFER TO PARTS PRICE LIST

1	757955	Shroud
3	572728	Blade, Fan
4	593363	Motor, Fan
5	560817	Bracket
6	681305	Screw, 1/4-20 x 1/2 (5)
7	485780	Compressor
8	680233	Screw (4)
9	595230	Washer (4)
10	585564	Sleeve (4)
11	596355	Grommet (4)
13	753598	Clamp (Used W/Original Compressor)
14	564234	Clamp, Coil Retainer
15	587970	Coil, Solenoid
16	598086	Valve Body
17	758638	Overload (Used W/Original Compressor)
18	589231	Overload (Used W/Service Compressor)
19	549086	Spring (Used W/Service Compressor)
20	549337	Relay (Used W/Service Compressor)
21	549336	Case (Used W/Service Compressor)
22	549342	Strap, Bale (Used W/Service Compressor)
23	755649	Drier
24	756299	Condenser
25	680811	Screw
26	587971	Harness, Coil
27	593519	Deflector, Front
29	681167	Screw
30	756345	Base, Unit
31	585219	Plug, Fan Motor
32	681650	Washer, Conical (Included With Fan Motor)
33	681656	Screw, 8-36 x 1/2 (Included With Fan Motor)
34	1105015	Cover, Terminal (Used W/Original Compressor)
35	758637	Relay, Start (Used W/Original Compressor)
36	756298	Accumulator